

MountainWest Overthrust Pipeline

BINDING OPEN SEASON:

Westbound Compression Expansion

MountainWest[™]

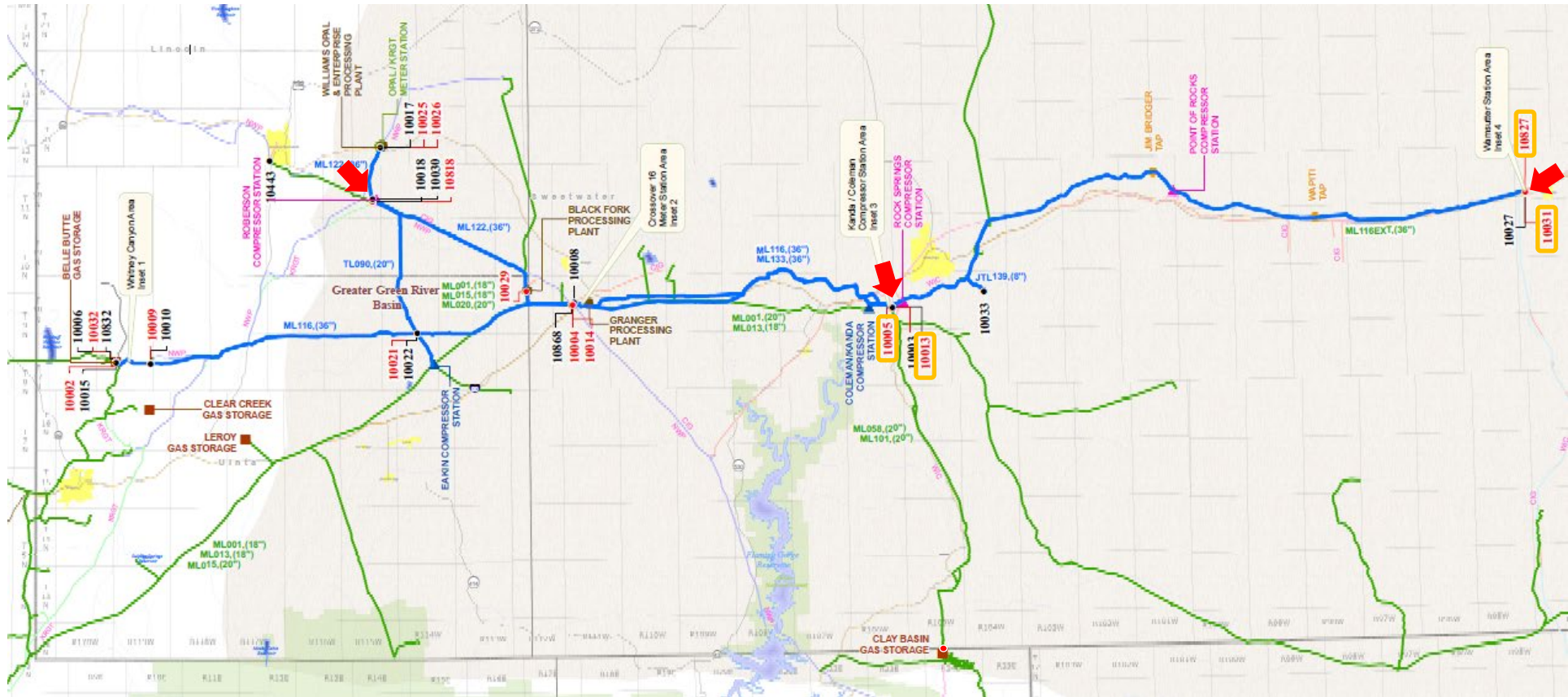
MWOP's Westbound Compression Expansion

- MountainWest Overthrust Pipeline (MWOP) is conducting a binding open season for its Overthrust Westbound Compression Expansion project.
- The Overthrust Westbound Compression Expansion project would provide up to 320,000 Dth/d of incremental firm transportation service from MWOP receipt points at REX Wamsutter (MAP #10827), WIC Wamsutter (MAP #10031) to a new, to-be-constructed, Kern River Gas Transmission delivery point (MAP #TBD) near the existing Roberson Creek point and up to 5,000 Dth/d of incremental firm transportation service from MWOP receipt points at WIC to Overthrust (MAP #10013) or Kanda/Col QPC REC (MAP# 10005) to a new, to-be-constructed, Kern River Gas Transmission delivery point (MAP #TBD) near the existing Roberson Creek point.
- Please contact your marketing representative for any inquiries involving off-system MWOP capacity.
- MWOP is accepting binding bids for firm transportation service for this incremental capacity which would be created through installation of new compression on MWOP's existing pipeline facilities.
- It is anticipated that the Overthrust Compression Expansion project would have an in-service date by December 1, 2025.

MWOP's Westbound Compression Expansion

- MWOP proposes an incremental reservation rate for service on the new capacity, plus MWOP's existing Systemwide Usage Charge and other charges, as set forth in MWOP's FERC Gas Tariff
 - Estimated Incremental Reservation Charge of \$5.47500/Dth/month, available as a negotiated rate or recourse rate
 - Systemwide Usage Charge: \$0.00167/Dth
- As an alternative to recourse rate, MWOP is open to negotiated rates.
- MWOP requires a minimum fifteen-year contract term and must receive contracts covering the total volume of 325,000 Dth/d and at a rate of \$5.47500/Dth/month.
- The Estimated Incremental Reservation Charge is premised on bidders committing to all 325,000Dth/d. However, in the event that total bid volume and terms are for less volumes, MWOP may re-evaluate the size of the project and the Estimated Incremental Reservation Charge. MWOP will discuss project changes with successful bidders.
- Submission of a Binding Bid Sheet is required to participate in the open season.

MWOP's Westbound Compression Expansion



Note: Map shown from MWOP's current system map with MAPs #10827 (REX Wamsutter receipt point), #10031 (WIC Wamsutter receipt point), #10013 (WIC to Overthrust receipt point), #10005 (Kanda/Col QPC REC), New Kern River delivery point adjacent to MAP #10018 (Roberson Creek delivery point)

MWOP's Westbound Compression Expansion

For questions and information, please contact:

Jack Czapiga

Gas Business Development Manager

O: 801-324-5070

C: 801-694-0740

jack.czapiga@dominionenergy.com

or

Joseph Hulse

Director, Marketing & Business Development

O: 801-324-5138

C: 801-244-0829

joseph.hulse@dominionenergy.com

Additional information available at: www.mwpipe.com