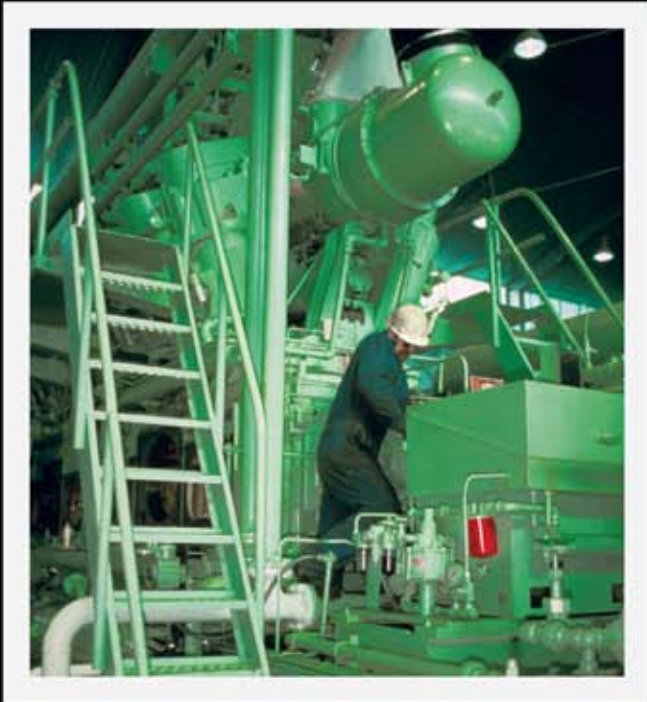


Can you tell which one complies with the new rules for fugitive emissions?



We can.

Good news!

**QES Applied Technology Services is ready now
to help you ensure compliance
and avoid hefty penalties**



**APPLIED
TECHNOLOGY
SERVICES**

Measuring and reporting are mandatory *now*. Why do it the hard way?

Subpart W of the new EPA GHG reporting rule is mandating the use of an optical imaging instrument. The rule will apply to all petroleum and natural gas production and natural gas processing, transmission, underground storage, LNG storage, LNG import and export and natural gas distribution facilities emitting 25,000 mt or more per year.



Infrared camera reveals what's invisible to the naked eye.

Standards for detecting fugitive GHG emissions, measuring, estimating, collecting and reporting of data are stringent, and penalties are hefty. This will require a level of expertise that's simply not practical

for most facilities to provide on their own. It's certainly not something you want to entrust to just anybody.

Who must report?

How the reporting regulations affect you depend on whether your facility emits 25,000 mt or more of GHGs per year. That means your first step is to determine GHG emissions to verify where your facilities fall.

If your facility emits 25,000 mt or more from combustion and fugitive sources, you'll be responsible for measuring and reporting those emissions every year. If there are changes in your operations that might affect emissions, you'll need to account for those as well.

Detecting, measuring and reporting is a detailed, painstaking process. You simply cannot afford to do it wrong.

Ready-made solution

There's no need to become entangled in the specialized, near-indecipherable world of detection, measurement and reporting. Not when there's a team of professionals ready to lift that burden for you at a fraction of the cost.



Regular vision.



Infrared vision.



The team at Applied Technology Services has the knowledge and experience to ensure the job's done right.

You'll find that team at Applied Technology Services, from Questar Energy Services.

You know Applied Technology Services, and you know you can count on us. We have a solid reputation for setting the quality standard. Our reputation has even found its way to the BLM, who recently showcased our work as an example of how to get the verification of heating value right. So you know that working with us is your wisest, surest choice.

Our strength and capabilities are recognized throughout the Rocky Mountain Region. We have the resources to provide turnkey service—from leak detection and measurement, all the way through GHG reporting.

Detection, measurement and reporting can be a nightmare for facilities who attempt to navigate it on their own, or who try to hand it off to inexperienced startups. Why do it the hard way? Applied Technology Services is ready to make your regulatory life easy for you right now.

With Applied Technology Services handling measurement and reporting, you can get back to focusing on your core business.

To learn more, call us now toll-free at 800-341-9984, or visit www.questarenergy.com.

You *don't* want to try this yourself...

A sampling of what must be measured and reported

Petroleum & Natural Gas Production

Reciprocating compressor rod packing venting (no vent line)

Natural Gas Processing

Reciprocating compressor rod packing venting (no vent line)

Natural Gas Transmission

Reciprocating compressor rod packing venting (no vent line)

Transmission storage tanks

Fugitive emissions from:

- Connectors
- Block valves
- Control valves
- Compressor blowdown valves
- Pressure relief valves
- Orifice meters
- Other meters
- Regulators
- Open ended lines

Natural Gas Storage

Reciprocating compressor rod packing venting (no vent line)

Fugitive emissions from:

- Connectors
- Block valves
- Control valves
- Compressor blowdown valves
- Pressure relief valves
- Orifice meters
- Other meters

Regulators

Open ended lines

LNG Storage

Reciprocating compressor rod packing venting (no vent line)

Fugitive emissions from:

- Valves
- Pump seals
- Connectors
- Vapor recovery compressors
- Other fugitive sources

LNG Import & Export

Reciprocating compressor rod packing venting (no vent line)

Fugitive emissions from:

- Valves
- Pump Seals
- Connectors
- Vapor recovery compressors
- Other fugitive sources


Natural Gas Distribution

Above ground meter regulators

Gate station fugitive emissions from:

- Connectors
- Block valves
- Control valves
- Pressure relief valves
- Orifice meters
- Other meters
- Regulators
- Open ended lines

For information call
QES Applied
Technology Services now

 800-341-9984

or visit
www.questarenergy.com

Full Service Analytical Lab

- Measurement and Analytical Services
- Hydrocarbon liquid analysis
- BTEX emissions analysis
- Wet chemistry analysis
- Extended gas analysis through C9

Mobile Analytical Services

- Extended gas analysis through C9
- Real-time onsite results
- Remote telemetry downloading
- Hydrocarbon/water dew point measurement

Measurement Services

- Dry flow meter installations/calibrations
- Meter calibration witnessing
- Liquid meter proving and repair

Chromatograph Services

- Audits
- Calibrations
- Installations and repairs

Customer Applications


- On-site C9 BTU gas analysis

- Professional data downloading, analysis and reporting on-site
- Metering facilities
- Custody transfer points
- Separators and liquid storage
- Onsite liquid meter proving and repair service
- Compressor stations
- Well sites
- Pipelines
- Full-service automation and instrument contractor specializing in equipment installation and servicing for the natural gas industry
- Industrial electrical contractor
- Master electrician
- Production automation systems
- Design and installation of Well SCADA Systems

Quality Standards

- All lab services meet or exceed API 14.1 Standard
- Daily calibration and verification
- Internal audit programs for all chromatograph
- Web-based electronic reporting
- Onsite sampling—eliminates sample cylinders

For information call
QES Applied Technology Services now

 **800-341-9984**

or visit www.questarenergy.com



**APPLIED
TECHNOLOGY
SERVICES**